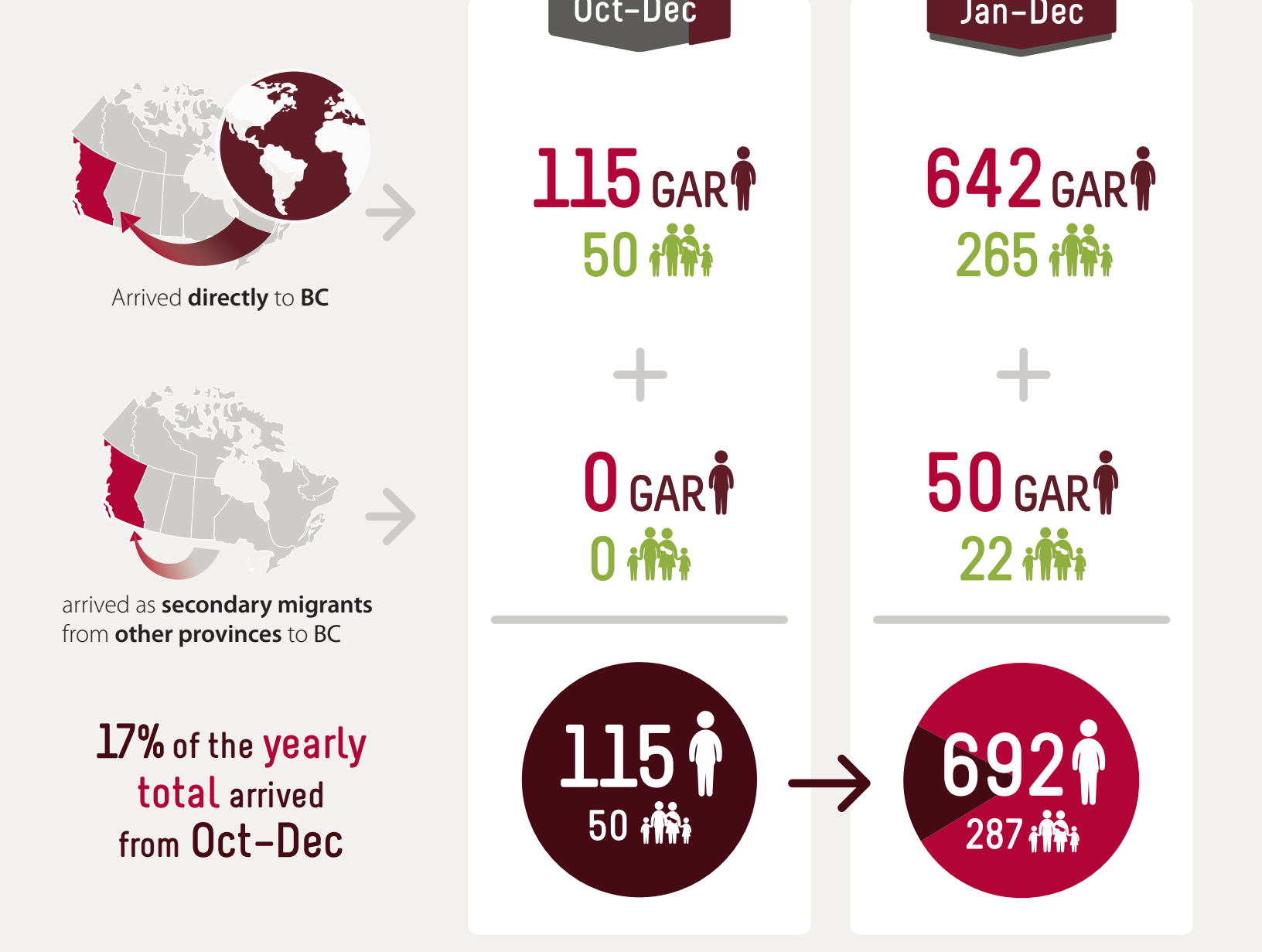
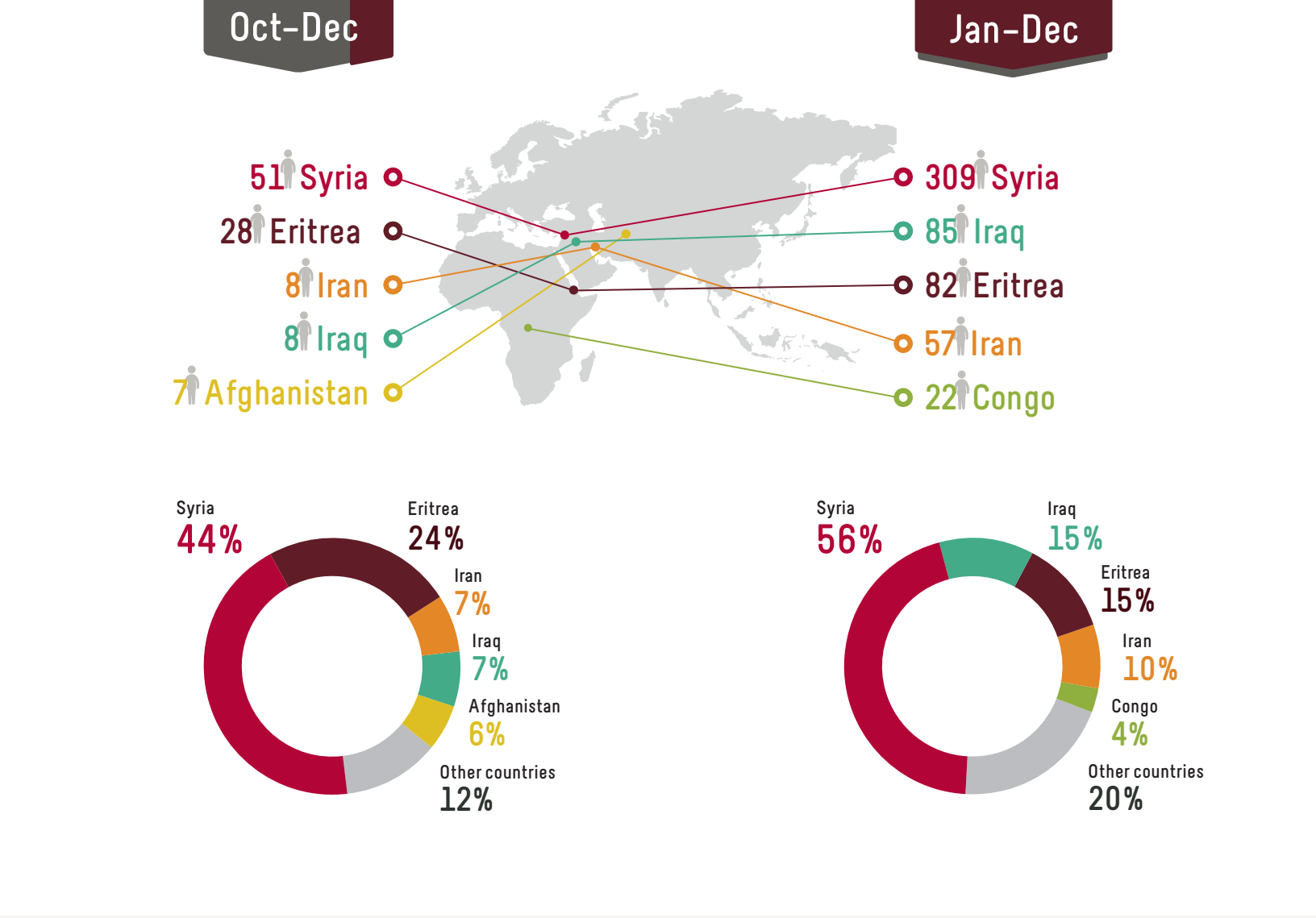


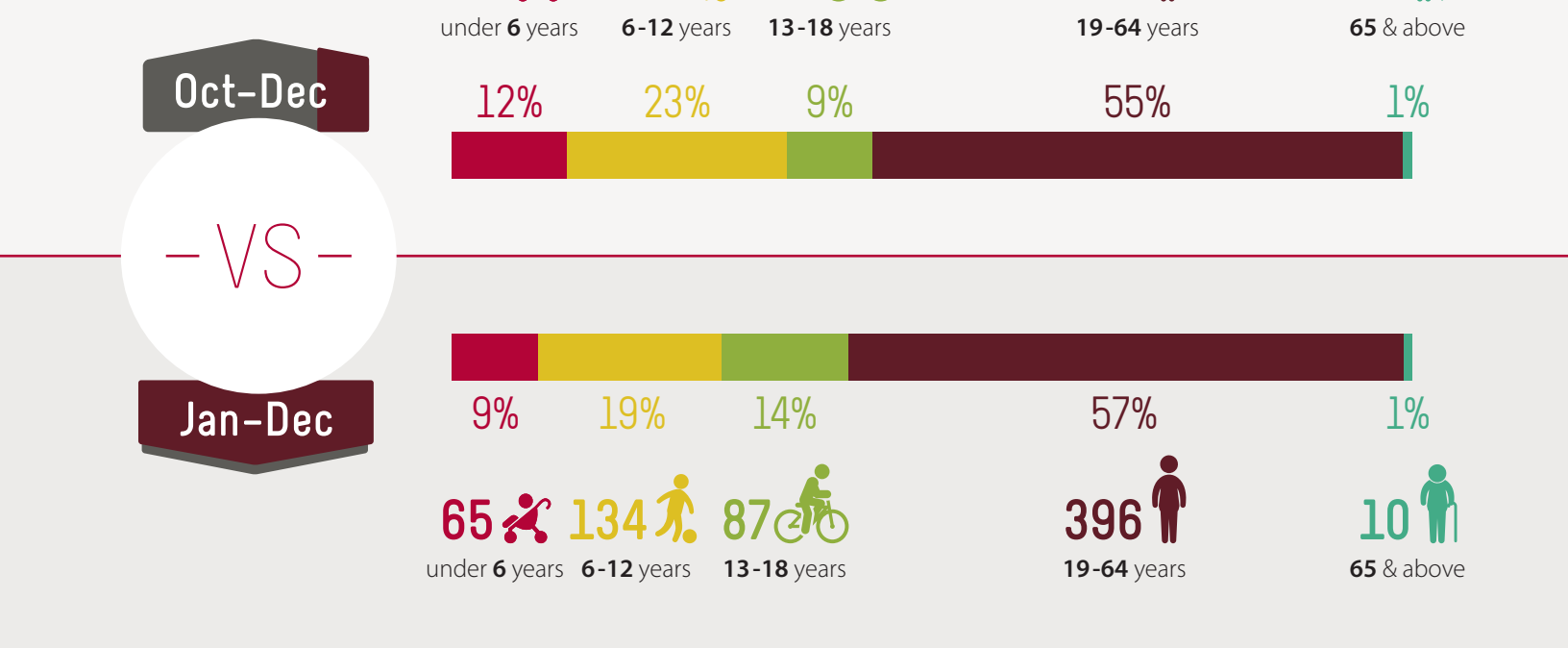
Arrivals



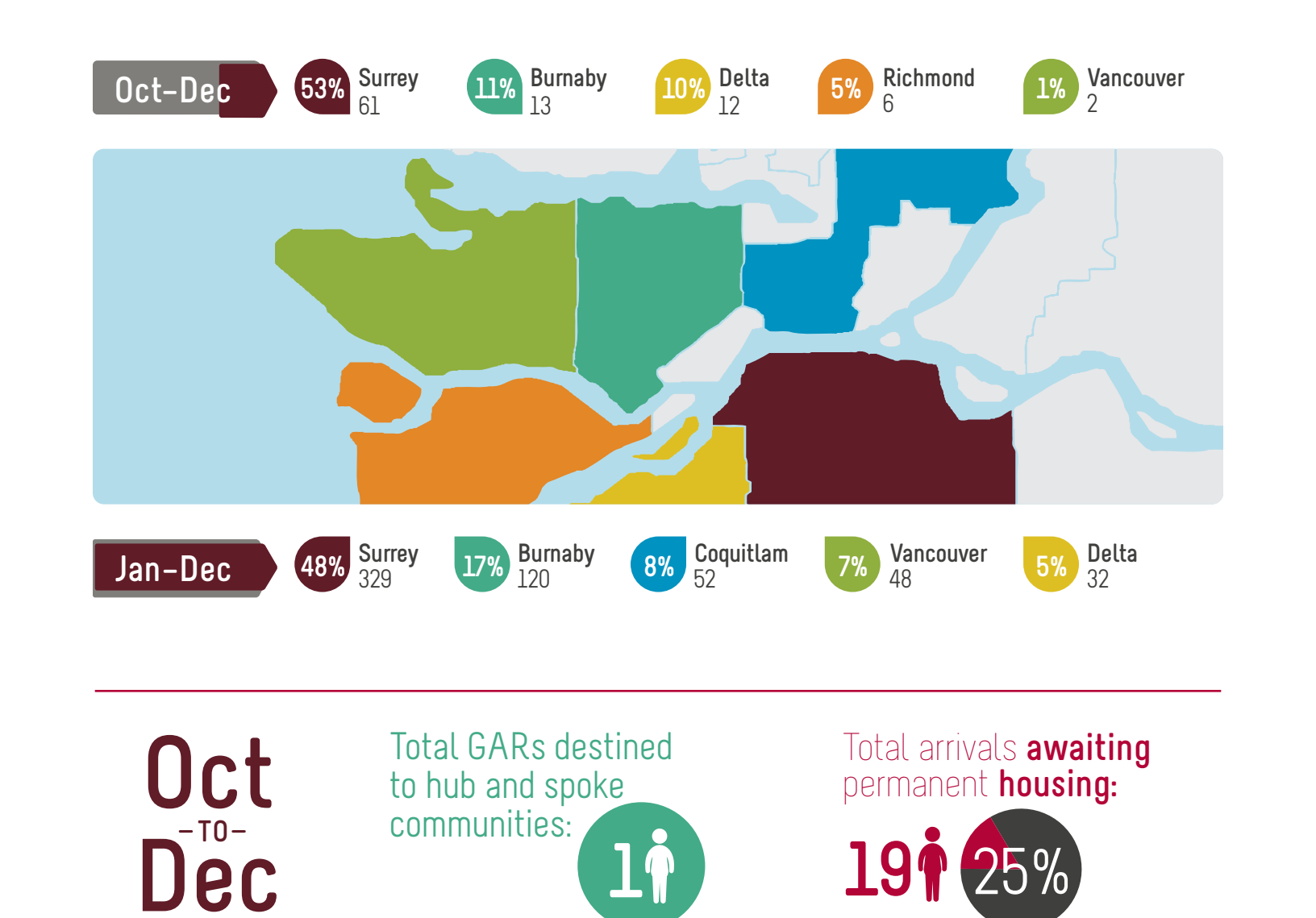
Top 5 source countries



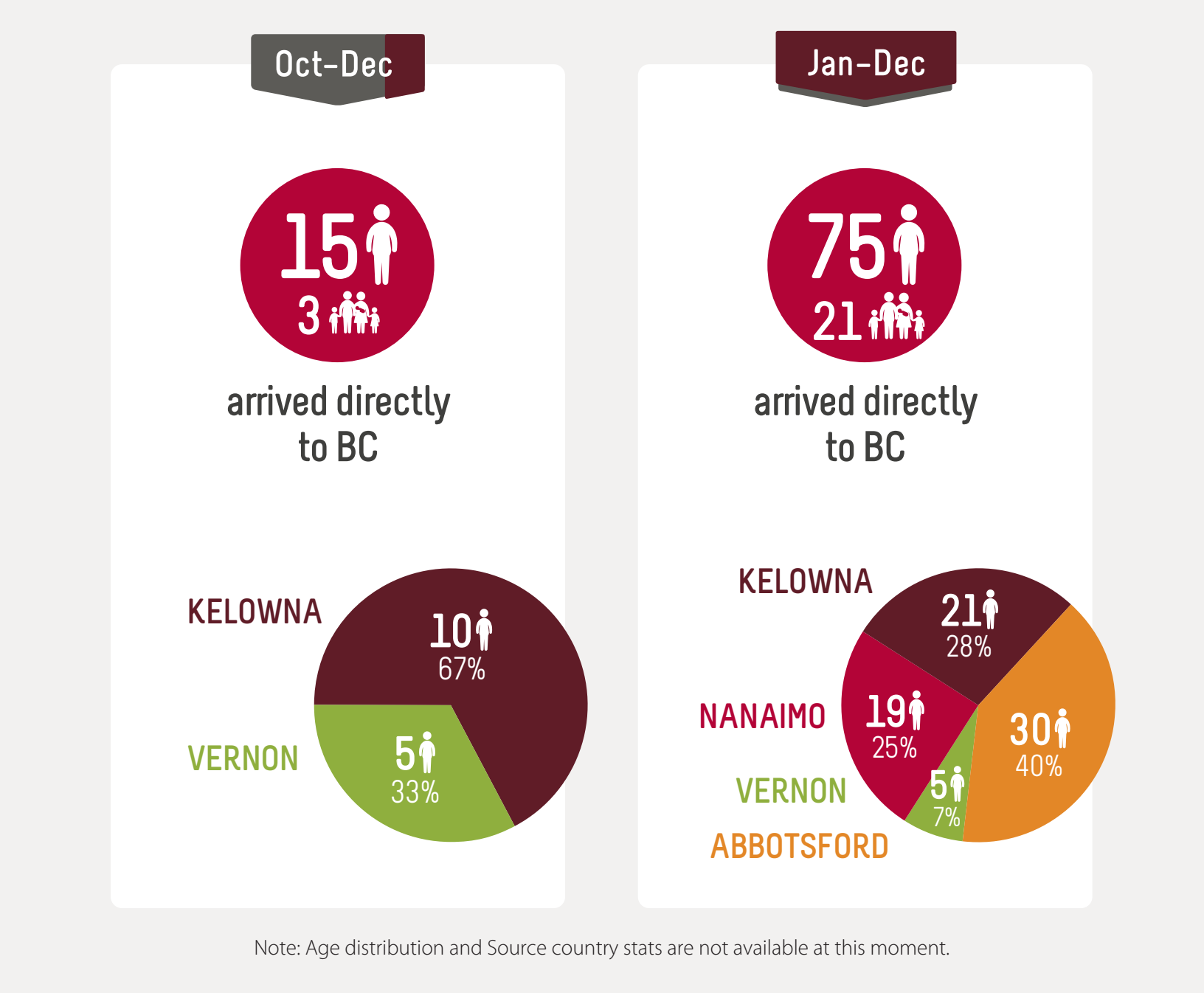
Age breakdown



Top 5 destinations by municipality



Statistical highlights for Hub and Spoke



Looking ahead to 2018 and beyond

- » From 2018-2020 the BC **GAR** target will likely rise from **900 to 1,200 annually**;
- » **GARs** from **Syria** are expected to continue to dominant arrival patterns this year;
- » The **Africa** continent will likely be the highest world region for **GARs** to BC including Eritreans, Somalians, Congolese and Rwandans.